



GESCO VALVES

*Perfect Solution for Environment & Technology
Proven Reliability & Performance*

Our Accreditation



اصنع في الإمارات
MAKE IT
IN THE EMIRATES

COMPANY PROFILE:

- GESCO, one of the premium, all resilient butterfly valves in oilfield industry, excels in wide range of applications.
- GESCO, specialized in Design, Manufacture of industrial valves, whose main product is all resilient butterfly valves. Our brand creating a reputation of quality and economical products in global market.

PRODUCTS:

- GESCO conducts Scientific research, Development, Production, Distribution and After sales service, has its distribution division with ready to deliver inventory that supplies following:
 - ▶ Butterfly valves
 - ▶ Ball Valves
 - ▶ Gate/Globe valves
 - ▶ Breather valves
 - ▶ Non- Return Valves
 - ▶ Pressure & Vacuum Relief Valves
 - ▶ Plug Valves
 - ▶ Level Indicators
 - ▶ Flow meters
 - ▶ Unions, Pup joints, Hose loops etc...

APPLICATIONS:

- GESCO products are commonly used for a variety of applications covering wide range of industries:
 - ▶ Oil and Gas (Drilling & Operation)
 - ▶ Petrochemical Industries
 - ▶ Chemical & Paint Industries
 - ▶ Water and Sewage Industries
 - ▶ Marine Industries
 - ▶ Dry bulk handling

CAPABILITY:

- **MANUFACTURING :**
 - GESCO is specialized in developing and manufacturing low and middle pressure Butterfly valves, Ball valves, Gate valves and check valve.
 - The factory emphasizes in manufacturing and supply of butterfly valves for hazardous as well non-hazardous applications.
 - This modern facility is supported by a specialized team of highly-skilled technicians who ensure that the valves consistently deliver high performance and adherence to international standards).
- **AFTER SALES SERVICE:**
 - GESCO has a service team of highly qualified and motivated employees to assist all clients with any issues regarding our products and systems.
 - We refurbish all kind of valves, Integrate actuators, Hydro testing of valves (can issue third party certificate on request), Machining and Painting.
 - Also, we maintain a comprehensive product and spare parts inventory that help us to equip our customers with enhanced availability with any kind of requirement.
- **OUR ACCREDITATION:**
 - GESCO is accredited and certified to globally recognized standards. All our products and services are delivered in conjunction with stringent quality and HSE practices, thereby providing our customers with the highest levels of assurance for Quality and Suitability to desired applications.

Our Accreditation



BUTTERFLY VALVES



A. BUTTERFLY VALVES-GESCO DESIGN

GESCO butterfly valve Complies with the requirements of content like Cement Slurry, Crude oil, Hot water, Petrol, Diesel etc.. and the Corrosive/Hazardous chemical content requirements like HCL (Up to 36%), H₂S, Brine, etc..

Key features for GESCO butterfly valves:

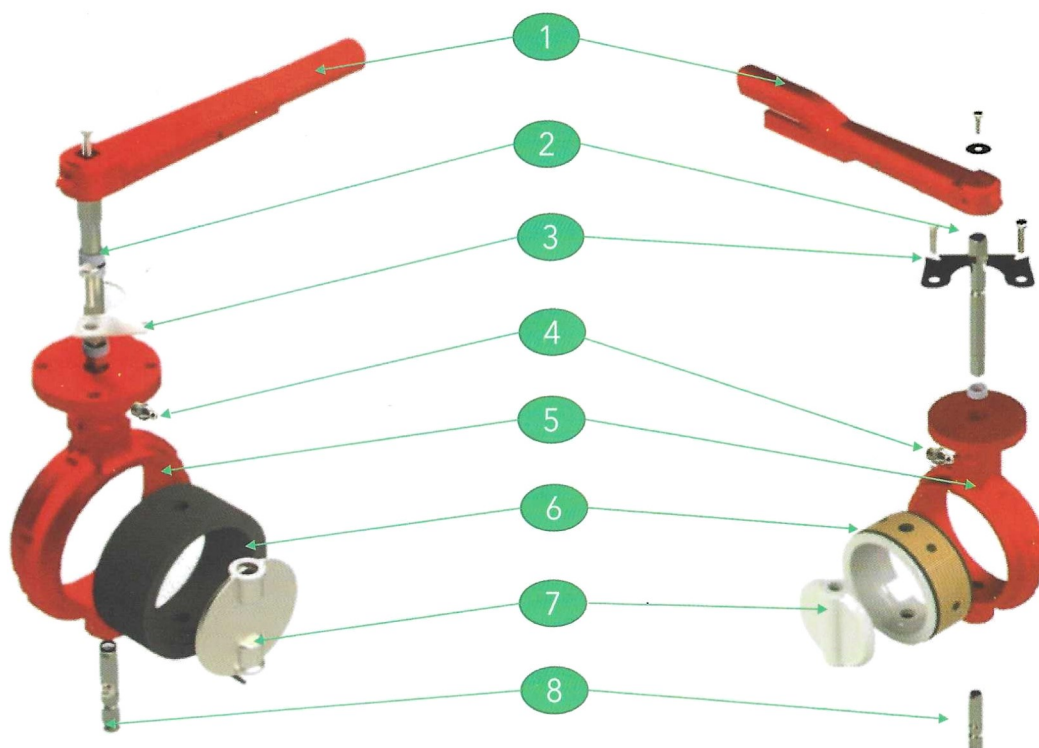
- ▶ These valves are manufactured with Applicable Design Standard: API 609.
- ▶ Flange connection conforms to EN/ISO standard.
- ▶ A one-piece body/disc with centric bearing is safe against expulsion.
- ▶ Sealing surface between disc and body is machined, to ensure long trouble-free operation and no leaks.
- ▶ Attention given to the sealing area - Specify at least double sealing.
- ▶ Sealing surface is ensured with the thickness on the seat as at least 3mm and the wide chambered sealing serves as a double-sided sealing of the flanges.
- ▶ The liner and the body are profile matched to prevent the liner being moved
- ▶ NBR for Diesel, Crude oil, Petrol etc. (Color Green)
- ▶ NR for Water, Cement Slurry, Silica sand etc. (Color Blue)
- ▶ PTFE for Highly Corrosive media, Toxic chemicals, HCL (upto 36%, H₂S, Brine solution etc. (Color Red)

TECHNICAL SPECIFICATION

Description	Butterfly Valves - Non-Hazardous Application	Butterfly Valves - Hazardous Application
Application	Diesel , Crude Oil, Petrol - NBR (Color Green) Water, Cement Slurry, Silica sand - NR (Color Blue)	Highly Corrosive media, Toxic Chemicals, HC (upto36%), H ₂ S, Brine solutions etc. (Color Red)
Size	2" to 36"	2" to 36"
Working Pressure	Maximum 16 Bar	Maximum 16 Bar
Working Temperature	-40C to 150C	-40C to 150C
Applicable Design Standard	API 609 or DIN EN1092 or JIS B2032	API 609 or DIN EN1092 or JIS B2032
Flange Ends	ASME B16.5 or DIN 2532 or JIS B2212	ASME B16.5 or DIN 2532 or JIS B2212
Water & Air Test	API 598 or DIN 3230 or JIS B2003	API 598 or DIN 3230 or JIS B2003
Applicable Operator	Lever, Worm Gear, or Pneumatic Actuator	Lever, Worm Gear, or Pneumatic Actuator
Mounting Pad	ISO 5211 Mounting pad for easy & quick positioning	ISO 5211 Mounting pad for easy & quick positioning
Spark Test	Not Applicable	14KV

Non-Hazardous Application

Hazardous Application



SPARE PART LIST

Item No.	Description	Non-Hazardous Application	Hazardous Application
1	Handle	Forged Steel	Forged Steel
2	Top Stem	SS-410	SS-410
3	Lock Plate	SS316L	SS316L
4	Grease Nipple	Copper	Copper
5	Body	Ductile Iron (DI)	Ductile Iron (DI)
6	Seat	EPDM / NBR / NR / VITON / HYPALON	PTFE / HALAR
7	Disc	DI / SS / Alloy Steel	SS / PTFE / HALAR
8	Bottom Stem	SS-410	SS-410



B. BUTTERFLY VALVES - FLANGED TYPE

Complies with the requirements of content like Cement Slurry, Crude oil, Hot water, Petrol, Diesel etc.. and the Corrosive/Hazardous chemical content requirements like HCL (Up to 36%), H₂S, Brine, etc..

Key features:

- ▶ Standard SORF flanges on both sides of the valve - 2" to 36"
- ▶ Split body or single rigid body
- ▶ Pressure rating = 10 Bar
- ▶ Structure - Centerline shaft without pin
- ▶ Body - Ductile Iron
- ▶ Seat - Depend on application - NBR / BUNA / Nitrile / Viton / PTFE
- ▶ Disc - Depend on application - SS / D.I. / D.I. + PTFE lined
- ▶ Shaft - SS 304
- ▶ Operation - Hand lever or Worm Gear or Pneumatic Actuator

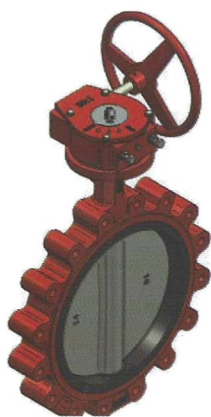


C. BUTTERFLY VALVES - LUG TYPE

Complies with the requirements of content like Cement Slurry, Crude oil, Hot water, Petrol, Diesel etc.. and the Corrosive/Hazardous chemical content requirements like HCL (Up to 36%), H₂S, Brine, etc..

Key features:

- ▶ Composed of metal such as Ductile Iron/ SS / WCB / Cast Iron
- ▶ Size - 2" to 36"
- ▶ Threaded tapped lugs positioned on the valve flanges
- ▶ Suitable for end-of-line service
- ▶ Pressure rating = 10 Bar
- ▶ Seat - Depend on application - NBR / BUNA / Nitrile / Viton / PTFE
- ▶ Disc - Depend on application - SS / D.I. / D.I. + PTFE lined
- ▶ Shaft - SS 304
- ▶ Operation - Hand lever or Worm Gear or Pneumatic Actuator



GATE VALVES

A. GESCO DM Style Mud Gate Valve

GESCO Mud Gate Valve is used for mud, cement, fracturing and Drilling fluid control for mud system.

Application: Water, Cement, Mud, Fuel, Hazardous/Non Hazardous Chemicals etc...

Size: DIN 25 to DIN 400

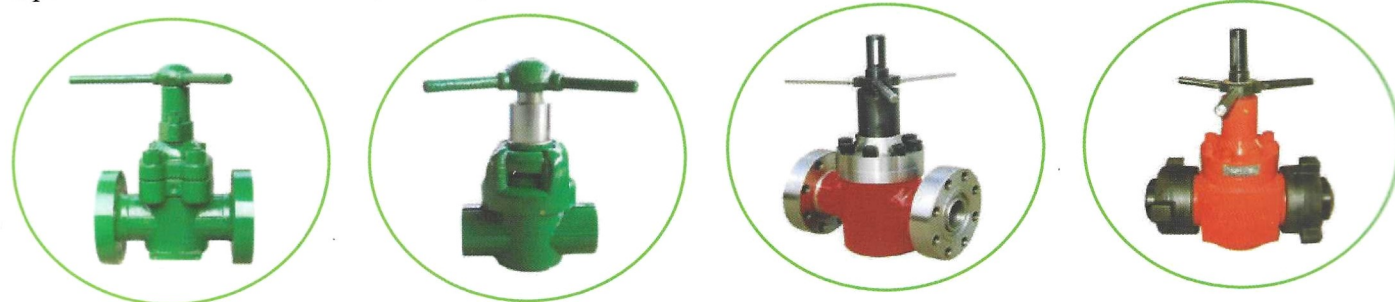
Applicable Design: API-600/602/603

Type: Mud Gate Valve, Solid/Split/Flexible Wedge, Knife Gate, Parallel Disk, PVC..

Working Pressure: PN 10 to PN 250 Temperature: -45C to 150C

Flange: ASME B16.5/DIN 3230/JIS B2212

Operation: Hand Wheel/Lever, Gear Operation



GESCO Mud Gate Valve is equivalent to OM series, which is mainly used for mud, cement, fracturing and water service and are easy to operate and simple to maintain. This series of mud gate valve is rising stem, solid gate with resilient seals with superior design and precision workmanship to meet the working request. GESCO DM mud gate valves are identically to DM series in size and fully interchangeable spare parts can be provided.

Specifications:

- Designed specifically for abrasive and erosive condition
- Gates available: Nickel-plated carbon steel, Monel, Aluminum Bronze or Stainless Steel
- Stainless or Carbon Steel Inserts with Nitrile or HNBR Elastomer
- Connection: Flange/Thread/Butt weld/Hammer Union
- Pressure ratings up to 5,000 psi in 2", 3", 4", 5" x 4" and 6" x 4" Valve Sizes
- Working Temperature: -46°C ~ + 121°C
- Sour Service Models to NACE MR-01-75
- Specification Level: PSL1 ~ PSL3
- Performance Requirement: PR1 ~ PR2
- Factory Pressure Tested in Accordance with API.6A

Application:

Mud pump line, standpipe manifolds, oil and gas pipelines, abrasive drilling mud system, corrosive water flood lines, cementing services, wellheads, well treating chemicals.

Full Port 2000psi, 3000psi & 5000 psi WP



2"x 5000 (2000, 3000)
Psi Flanged End



2"x6000 (2000, 3000)
Psi Butt Weld End



2"x5000 (2000, 3000)
Psi Threaded End

B. Model 72 style Mud Gate Valve

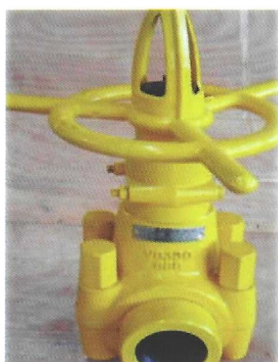
GESCO Mud Gate Valve is equivalent to model 72 series, easy operation, tight shut offs, long service life before overhaul. This assures simple, fast, low cost renewal in the field

Specifications:

- Size: 2", 3", 4", 4" x 5"
- Working Pressure: 2000psi, 3000psi, 5000psi
- Working Temperature: -46°C ~ +240°C
- Connections: LP Threaded, Butt-weld, Flanged, Union Available
- Working Medium: Sour Gas, Water Flood
- Valve body protected by oil and abrasion resistant long life rubber seals
- Full rising, one piece forged gate & stem, shows at a glance if valve is open, partly open or closed.

Application:

Mud pump line, standpipe manifolds, oil and gas pipelines, abrasive drilling mud system, corrosive water flood lines, cementing services, wellheads, and well treating chemicals



LP Threaded End Connection



Butt Welded End Connection



Flanged End Connection

C. Z23Y style Metal Seal Mud Gate VALVE

Z23Y / Z43Y series of mud gate valves are designed by parallel-type Metal to Metal Sealing, mainly used for Oil and Gas lines, Wellheads, Manifolds and Pipelines, Crude Oil and Sour Gas, Well Treating Chemicals. It is convenient to open, the two ends of the valve and pipes are joined and staled with spherical movement,



Specifications:

MODEL	Z23Y-35-DN50	Z23Y-35-DN65	Z23Y-35-DN80	Z23Y-35-DN100	Z23Y-70-DN50	Z23Y-70-DN65	Z23Y-70-DN80	Z23Y-70-DN100
W.P.	5000 PSI				10000 PSI			
SIZE	50 (21/16")	65 (29/16")	80 (31/8")	100 (41/16")	50 (21/16")	65 (29/16")	80 (31/8")	100 (41/16")
MEDIUM	MUD							
CONNECTION	UNION, THREADED, BUTT WELDED				FLANGE			
CONNECTION SIZE	Tr120x6 (Tr100x12)	Tr130x6 (Tr120x12)	Tr150x6	Tr180x6	BX152	BX153	BX154	BX155
STRUCTURE LENGTH	230	235	270	330	356	380	430	520

D. FC/FL style Slab Gate Valve

GESCO Slab Gate Valve is equivalent to model FC & FL series, whose feature is a non-rising stem with a slab gate, full-bore thru-conduit design, floating slab gate and seats, floating seat ring body bushing design to provide safe dependable service. This series of gate valves are made by integral die forging, the body and flanges are integral (non-welding). Shot Blasting for every parts of valve. Phosphate to improve corrosion resistance

Specifications:

- Manufactured and tested in accordance with API Spec 6A
- Forged Steel Body and Bonnet
- A True Bi-Directional Valve
- Low Operating Torque
- API Spec 6A PSL, 1, 2, 3
- Material Classes DD, EE, FF, to NACE MR-0175
- Connections: Threaded, Butt-weld, Flanged, Union
- Medium available: Oil, Gas, and Water
- Specification Level: PSL1 ~ PSL4
- Performance Requirement: PR1 ~ PR2
- Size from 1 13/16" - 7 1/16"
- Working pressures: 5000-20000 PSI

Application:

Well Control system, Drilling Manifolds, X-mas trees

Slab Gate Valve divided into Non-Rising stem and Rising stem type, also into Manual and Hydraulic type

E. Manual Slab Gate Valve (Non-Rising Stem)

Feature:

- Simple structure and renewable gate and seat assembly
- One-piece and double-acting gate with long service life
- Both thrust bearings with large load capacity and composite rubber-plastic stem lip packing minimize operational torque
- Bearing cap is provided with a grease cup to make it easy to inject lubricating grease in the field
- Threaded packing gland allows removal of bearings and stem packing under line pressure
- Both the bolted bonnet and modern bonnet seal ring provide simple structure and reliable sealing
- The scaling surfaces of the gate and seat are hard faced for wear and corrosion resistance
- Wave springs are installed between the body, seat and between the gate and seat. The gate and seat still maintain a positive metal to metal seal under low pressure;
- Floating gate design requests the hand wheel to be backed off 1/4 turn after its rotation can go no further.



F. HYDRAULIC SLAB GATE VALVE

Hydraulic slab gate valves adapt hydraulic control, Used extensively in the automatic control system and remote control, Work steadily and use freely.

Specifications:

- Nominal pressure: 2000psi - 15000psi
- Nominal size: 1-13/16" - 4-1/16"
- Working temperature: P U
- PR: 1-2
- PSL: 1-4
- MC: AA-FF
- OP: 100~1500psi



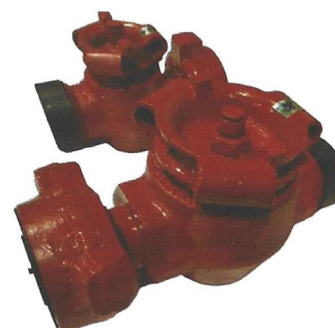
G. ULT Plug Valve Low Torque

GESCO provides API 6A standard ULT style Plug Valves with standard union connections, and a standard service rating up to 15000psi NSCWP, size from 1" to 3". ULT Plug valve provides flow control for oil field applications such as cementing, fracturing acidizing, coiled tubing, sand control, and manifold, trailers.

Manual, Air and Hydraulic operation available for standard sour gas and low temperature application.



GESCO ULT Plug Valves has the features of superior seal ability, low operating torque, and longer service life, dual seal design, which consists of high alloy steel valve body, plug and rubber seals. The cylinder body inner wall and side segments work together with the rubber seal segment to provide sealing. The metal-to-metal sealing is available between the side segment and cylinder plug, and it can be easily open or closed even the working pressure above 10000 psi.





H. RESILIENT SEATED/SOFT SEATED GATE VALVE

- Diameter: DN40-600
- Pressure Rating = 10 Bar
- Pressure test: BS5163/ISO5208
- Valve design: DIN3352-F4
- Temperature: 0-80 °C
- Application Medium: Water, Crude Oil, Gas etc.



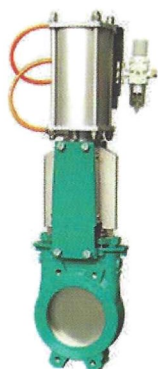
I. STAINLESS STEEL FLANGE GATE VALVE

- Size: 1.5" to 48"
- Pressure Rating: PN10-PN64
- Material: SS304, SS316
- Design Standard: API600, BS5153, GB/T122234, JIS B2073
- Inspection Standard: API 598, JB/T9092, JIS B2003
- Application Medium: Oil, Gas, Water, Crude oil, Steam etc..
- Application Temperature: 29-425°C



J. API SLAB GATE VALVE

- Product scope: NPS 2" to NPS 60" - CL150 to CL1500
- Design standard: API 6D
- Flange connecting end: ASME B16.5, ASME B16.47
- Inspection and test: API 6D
- Main body material: WCB, LCB, CF8, CF8M, etc....
- Drive device: Handle, Bevel gear, Electric & Pneumatic



K. PNEUMATIC GATE VALVE

- Size: DN40-600
- Pressure Rating: 0.3-10 MPa
- Material: Alloy steel, Stainless steel
- Design Standard: API 6D, ASME B16.34
- Inspection Standard: API598
- Application medium: Oil, Gas, Liquid
- Application Temperature: 196-500°C

BALL VALVES



GESCO COVERS FLOWING TYPES OF BALL VALVES:

- Trunnion Mounted Ball Valve
- Floating Ball Valve
- Top Entry Ball Valve
- Three Way & Four Way Ball Valve
- Two Piece & Three-Piece Butt Ball Valve

Features:

- Design and Manufacture: API 6D, API 608, ISO 17292,
- Size Range: From ½" to 48"
- Pressure Ratings: Up to 150LB (PN1.6-PN4.0MPa)
- Temperature Range: -29°C to 350°C
- End Connections: ASME B16.5, JB/T79, EN1092
- Face to Face Dimension: Manufacturer standard
- Inspection and Testing: API 6D, API 598

CHECK VALVES



GESCO COVERS FLOWING TYPES OF CHECK VALVES:

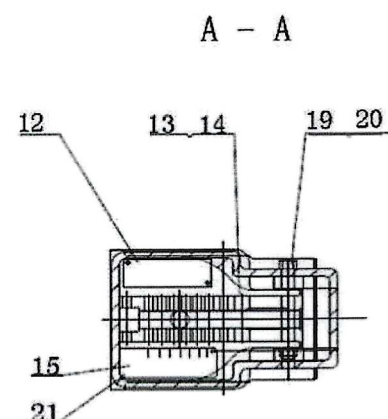
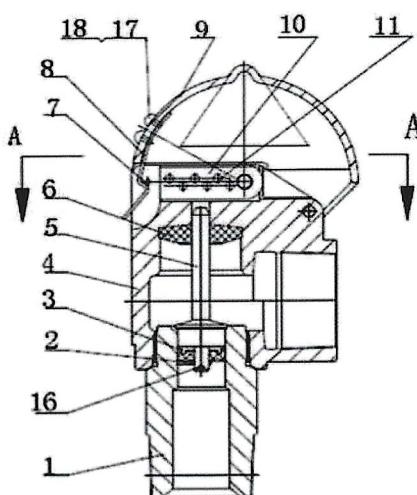
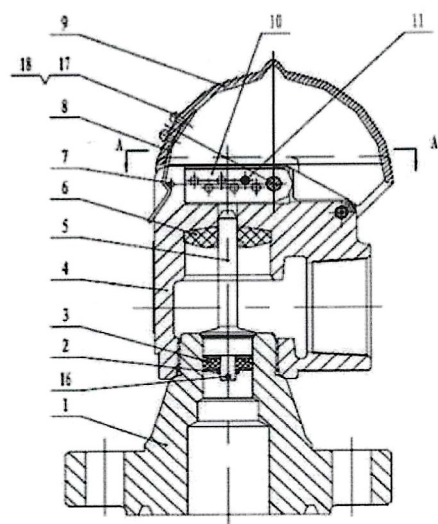
- Dual Plate Check Valve
- Swing Check Valve
- Rubber Flap Check Valve
- CF8 Butterfly Check Valve

Features:

- Body Construction: Lift check valve, Swing check valve, Ball check valve, etc...
- Bonnet Design: Bolted bonnet, Welded bonnet, Pressure sealed bonnet etc...
- Design and Manufacture: API 602, BS 5352, ASME B16.34
- Size Range: 1/2" to 4"
- Pressure Ratings: 150LB to 2500LB
- Temperature Range: 196°C to 500°C
- End Connections: Threaded, Socket-Welded, Butt-Welded, Flange type etc...
- Face to Face Dimension: ASME B16.10 and other standard
- Inspection and Testing: API 598 and other standard.

SHEAR RELIEF VALVE

GESCO supply style JA-3 Shear Relief Valve 3"-S000psi, which is popular used in BOMCO Mud Pump F1300/1600, HHF1300/1600 and 3NB1300/1600. There is Threaded and Flanged connection, union is available upon request.



We also have YYFJ-L2 Overflow Valve, JZR3-L8 Angle Stop Valves, PJC1-L8 Air Release Valve used for Mud Pump Pulsation Dampener

GESCO-OTHER SPECIALIZED OILFIELD ACCESSORIES

Other than Valves, GESCO also has its distribution division with ready to deliver inventory that supplies:

- Customized fabricated pipe spools with unions including internal coating suitable for non-hazardous contents
- Flow meters
- Level indicators
- Aero unions
- Hammering unions
- Swivel joints
- ASME Manways
- Rigid couplings
- Mud pressure gauge
- Rubber & Metal expansion Joints etc...






GESCO

We Control the Flow

Global Engineering Supplies Corporation LLC

 **P.O. Box: 380133, Sharjah, UAE.**

 **+971 6 767 5253**

 **valves@gesco-me.com**

 **www.gesco-me.com**